

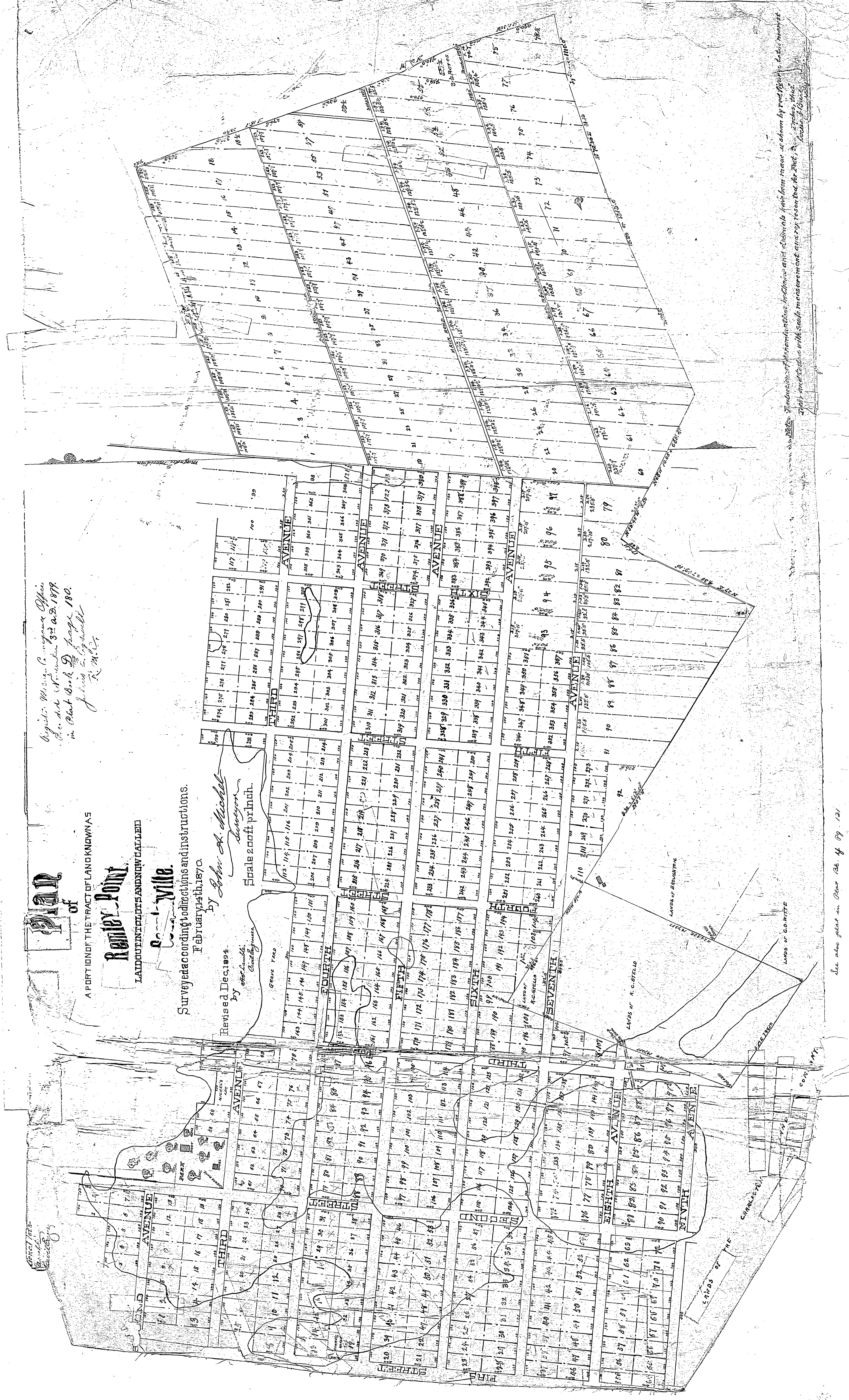
# PLAN

of  
**REINLEY POINT**  
 A PORTION OF THE TRACT OF LAND KNOWN AS  
**REINLEY POINT**  
 LAID OUT IN LOTS AND NOW CALLED  
**Count-Mile.**

Surveyed according to directions and instructions.  
 February 14th 1870.

Revised Dec. 1894.  
 by *John A. Mitchell*  
*Surveyor*  
 Scale 200ft princ'h.

*Register, Milwaukee, Wisconsin Office  
 No. 244 N. W. corner 3rd & B. 1879.  
 in Plat Book D page 180.  
 J. W. S. Ingalls  
 R. M. T.*



*See also plat in Plat Book of pg. 121.*