

COLLECTION SCHEDULE

(See map on last page for additional guidance)

Effective Week of July 07, 2014

If you do not see your main subdivision's name listed, please contact the Sanitation office at 884-8518.
(Not all subdivision's individual neighborhoods have been listed.)

SUBDIVISION	GARBAGE & TRASH COLLECTION SCHEDULE
A	
Avian Park	Wednesday
B	
Back Bay Village	Wednesday
Baytree	Wednesday
Bayview Acres	Wednesday
Belle Hall	Monday
Ben Sawyer Blvd.	Wednesday
Boatyard Landing	Wednesday
Bowman Rd. (Johnnie Dodds to Rifle Range Road)	Wednesday
Bowman Rd. (Johnnie Dodds to Mathis Ferry Road)	Monday
Braemore	Monday
Brickyard Plantation	Thursday
Bridlewood	Monday
Broadway Street	Wednesday
Brookgreen	Wednesday
C	
Candlewood	Monday
Cardinal Hill	Thursday
Carol Oaks	Thursday
Carolina Park	Tuesday
Carriage Hill Landing	Tuesday
Cassina Heights	Wednesday
Cassina Plantation	Wednesday
Center Lake	Tuesday
Chadbury Village	Tuesday
Charleston National	Tuesday
Chelsea Park	Wednesday

Garbage & trash needs to be placed curbside by 7:00 a.m. on your scheduled collection day.

Garbage is considered household waste placed in your container.

Trash is considered bagged yard debris, tree limbs, household appliances, and household furniture.

COLLECTION SCHEDULE

(See map on last page for additional guidance)

Effective Week of July 07, 2014

If you do not see your main subdivision's name listed, please contact the Sanitation office at 884-8518.
(Not all subdivision's individual neighborhoods have been listed.)

SUBDIVISION	GARBAGE & TRASH COLLECTION SCHEDULE
Chuck Dawley Area	Wednesday
<i>Coleman Boulevard – (West from Shem Creek Bridge to Ravenel Bridge)</i>	<i>Wednesday</i>
Coleman Boulevard – (East from Shem Creek Bridge to Ben Sawyer Bridge)	Wednesday
Colonnade	Thursday
Commonwealth/ Town	Tuesday
Commonwealth/ County	Private Service
<i>Cooper Estates + Millwood</i>	<i>Wednesday</i>
Coopers Landing	Monday
Coopers Pointe	Monday
<i>Cottingham Townhomes</i>	<i>Wednesday</i>
Cove Inlet	Wednesday
<i>Creekside</i>	<i>Wednesday</i>
Crown Point	Tuesday

D

Darrell Creek 1/ County	Private Service
Darrell Creek 1&2	Tuesday
Daybreak	Wednesday
Dunes West	Thursday

E

East Crossing	Tuesday
Edmund Jenkins	Wednesday
Etiwan Pointe	Monday

F

Fairmont Oaks	Wednesday
Fairmont Villas	Wednesday
Fairway Place	Tuesday

Garbage & trash needs to be placed curbside by 7:00 a.m. on your scheduled collection day.

Garbage is considered household waste placed in your container.

Trash is considered bagged yard debris, tree limbs, household appliances, and household furniture.

COLLECTION SCHEDULE

(See map on last page for additional guidance)

Effective Week of July 07, 2014

If you do not see your main subdivision's name listed, please contact the Sanitation office at 884-8518.
(Not all subdivision's individual neighborhoods have been listed.)

SUBDIVISION	GARBAGE & TRASH COLLECTION SCHEDULE
Fiddlers Marsh	Wednesday
<i>Fox Chase</i>	<i>Tuesday</i>
Fox Pond	Wednesday
Freelock Drive	Wednesday
Freeman	Wednesday
G	
Glen Lakes	Monday
Graddick Road	Wednesday
Grassy Creek	Monday
Green Hill & DuPre Lane	Monday
Gregorie Ferry - Enclave	Thursday
<i>Greystone</i>	<i>Tuesday</i>
<i>Groves</i>	<i>Wednesday</i>
<i>Groves Manor</i>	<i>Wednesday</i>
H	
Hamlet Square	Monday
Hamlin Park	Tuesday
Hamlin Plantation	Tuesday
Harbor Watch	Monday
Harborgate Shores	Wednesday
Heritage	Wednesday
Heritage Village	Monday
<i>Hermitage</i>	<i>Wednesday</i>
Heron Pointe	Monday
<i>Hibben Ferry</i>	<i>Wednesday</i>
Hickory Shadows	Wednesday
Hidden Cove	Monday
<i>Hidden Lakes</i>	<i>Tuesday</i>
<i>Highway 17 (N) Ravenel Bridge to Venning Road</i>	<i>Wednesday</i>

Garbage & trash needs to be placed curbside by 7:00 a.m. on your scheduled collection day.

Garbage is considered household waste placed in your container.

Trash is considered bagged yard debris, tree limbs, household appliances, and household furniture.

COLLECTION SCHEDULE

(See map on last page for additional guidance)

Effective Week of July 07, 2014

If you do not see your main subdivision's name listed, please contact the Sanitation office at 884-8518.
(Not all subdivision's individual neighborhoods have been listed.)

SUBDIVISION	GARBAGE & TRASH COLLECTION SCHEDULE
<i>Highway 17 North – Venning Road to Awendaw limits</i>	<i>Tuesday</i>
Highway 17 South - Awendaw Limits to Faison Road	Tuesday
<i>Highway 17 South - Park West Blvd to Longpoint Road</i>	<i>Thursday</i>
<i>Highway 17 South – Longpoint Road to James Nelson Rd</i>	<i>Tuesday</i>
<i>Highway 17 South – James Nelson Road to Ravenel Bridge</i>	<i>Monday</i>
Highway 41	Thursday
Hobcaw Creek Plantation	Monday
Hobcaw Point	Monday
Home Farm	Wednesday
Horlbeck Creek	Thursday
Hungryneck Boulevard Businesses	Thursday
Hunters Run	Monday
<i>Hunters Trace</i>	<i>Wednesday</i>
I	
I'On	Monday
Indigo Chase	Thursday
Ivy Hall	Thursday
L	
Lake Hunter Circle	Monday
Lake Hunter Commons	Monday
<i>Lakeshore</i>	<i>Tuesday</i>
Landings Run	Monday
Laurel Grove	Thursday
Laurel Lakes	Wednesday
Lazy Acres	Wednesday
Lieben Park	Tuesday
Long Point Businesses	Monday
Longpoint Road	Monday
Long Point Subdivision	Monday

Garbage & trash needs to be placed curbside by 7:00 a.m. on your scheduled collection day.

Garbage is considered household waste placed in your container.

Trash is considered bagged yard debris, tree limbs, household appliances, and household furniture.

COLLECTION SCHEDULE

(See map on last page for additional guidance)

Effective Week of July 07, 2014

If you do not see your main subdivision's name listed, please contact the Sanitation office at 884-8518.
(Not all subdivision's individual neighborhoods have been listed.)

SUBDIVISION	GARBAGE & TRASH COLLECTION SCHEDULE
Lowcountry Blvd.	Monday

M

Mallard Lakes	Wednesday
Marsh Harbor	Wednesday
Marsh Pointe	Wednesday
Mathis Ferry Road	Monday
Meadows	Wednesday
Molasses Creek	Monday
Montclair	Tuesday
Moss Park	Wednesday
Myrtle Court	Wednesday

N

New Parrish Village	Wednesday
North Point	Wednesday

O

Oak Park	Monday
Oakhaven Plantation	Wednesday
Oakleaf	Wednesday
Old Georgetown Crossing	Wednesday
Old Georgetown Hwy. (near K-Mart)	Wednesday
Old Village	Wednesday
Old Village Landing	Wednesday
Olde Park	Monday
On the Harbor	Monday

P

Garbage & trash needs to be placed curbside by 7:00 a.m. on your scheduled collection day.

Garbage is considered household waste placed in your container.

Trash is considered bagged yard debris, tree limbs, household appliances, and household furniture.

COLLECTION SCHEDULE

(See map on last page for additional guidance)

Effective Week of July 07, 2014

If you do not see your main subdivision's name listed, please contact the Sanitation office at 884-8518.
(Not all subdivision's individual neighborhoods have been listed.)

SUBDIVISION	GARBAGE & TRASH COLLECTION SCHEDULE
Park West	Thursday
Parker Island	Thursday
Parrish Place	Monday
Parrish Place Apartments	Monday
<i>Patriots Province</i>	<i>Wednesday</i>
Pepper Plantation (Town)	Tuesday
Pepper Plantation (County)	Private Service
Phillips Manor	Thursday
Phillips Park	Wednesday
Pinckney Place	Tuesday
<i>Pine Hollow Road</i>	<i>Wednesday</i>
Pirates Cove	Wednesday
<i>Planters Place</i>	<i>Wednesday</i>
Planters Pointe	Thursday
Pleasant Pines	Wednesday
Point Pleasant	Monday
Primus Road	Thursday

Q

Quail Hollow	Tuesday
<i>Queens Court</i>	<i>Wednesday</i>
Queens Row	Monday

R

Ravens Run	Tuesday
Remleys Point	Monday
Remington Forrest	Wednesday
Reserve at Wando East	Monday
Rice Planters Pointe	Monday
<i>Rifle Range Road (Venning Road to Porchers Bluff)</i>	<i>Tuesday</i>
Rifle Range Road (Venning Road to Ben Sawyer)	Wednesday

Garbage & trash needs to be placed curbside by 7:00 a.m. on your scheduled collection day.

Garbage is considered household waste placed in your container.

Trash is considered bagged yard debris, tree limbs, household appliances, and household furniture.

COLLECTION SCHEDULE

(See map on last page for additional guidance)

Effective Week of July 07, 2014

If you do not see your main subdivision's name listed, please contact the Sanitation office at 884-8518.
(Not all subdivision's individual neighborhoods have been listed.)

SUBDIVISION	GARBAGE & TRASH COLLECTION SCHEDULE
River Reach	Monday
River Watch	Monday
Rivertowne	Thursday
Rivertowne Country Club	Thursday
Rosemead	Wednesday
Rosemead Villas	Wednesday

S

Saltgrass Pointe	Wednesday
Sandpiper Point	Monday
<i>Sandpiper Village</i>	<i>Wednesday</i>
Sawyers Landing	Wednesday
Schirmer Avenue	Wednesday
Scotts Creek	Wednesday
Sea Island Crossing	Wednesday
Seacoast Bank	Wednesday
Seagull Drive	Wednesday
<i>Seaside Farms</i>	<i>Tuesday</i>
<i>Seaside Farms Proper</i>	<i>Tuesday</i>
Shell Point	Wednesday
Shemwood I	Wednesday
Shemwood II	Wednesday
Simmons Point	Wednesday
Six Mile/ Town	Tuesday
Six Mile/ County	Private Service
Snee Farm (Gardens/ Lakes/ Ventura Villas)	Tuesday
Snowden/ Town	Monday
Snowden/ County	Private Service
Somerset Point	Monday
Stuart Engles Blvd.	Wednesday
Summerset Oaks	Tuesday

Garbage & trash needs to be placed curbside by 7:00 a.m. on your scheduled collection day.

Garbage is considered household waste placed in your container.

Trash is considered bagged yard debris, tree limbs, household appliances, and household furniture.

COLLECTION SCHEDULE

(See map on last page for additional guidance)

Effective Week of July 07, 2014

If you do not see your main subdivision's name listed, please contact the Sanitation office at 884-8518.
(Not all subdivision's individual neighborhoods have been listed.)

SUBDIVISION	GARBAGE & TRASH COLLECTION SCHEDULE
<i>Sweetgrass</i>	<i>Tuesday</i>
Sweetgrass Village	Tuesday
T	
Tolers Cove	Wednesday
Tupelo at Pepper Plantation	Tuesday
V	
Village (Rifle Range Road)	Wednesday
Village at Heron Lake	Monday
<i>Village Creek Townhomes</i>	<i>Wednesday</i>
W	
Wakendaw East	Monday
Wakendaw Lakes	Monday
Wakendaw Manor	Monday
Wakendaw on the Creek	Monday
Wakendaw Place	Monday
Wando East	Monday
Wando Farms	Tuesday
Wando Lakes	Monday
Watermark	Wednesday
Waters Edge	Tuesday
Waterway Arms	Wednesday
West Point	Tuesday
Wexford	Tuesday
<i>Wharf Indigo</i>	<i>Wednesday</i>
Whilden St. Apts.	Wednesday
Whitehall Terrace	Tuesday

Garbage & trash needs to be placed curbside by 7:00 a.m. on your scheduled collection day.

Garbage is considered household waste placed in your container.

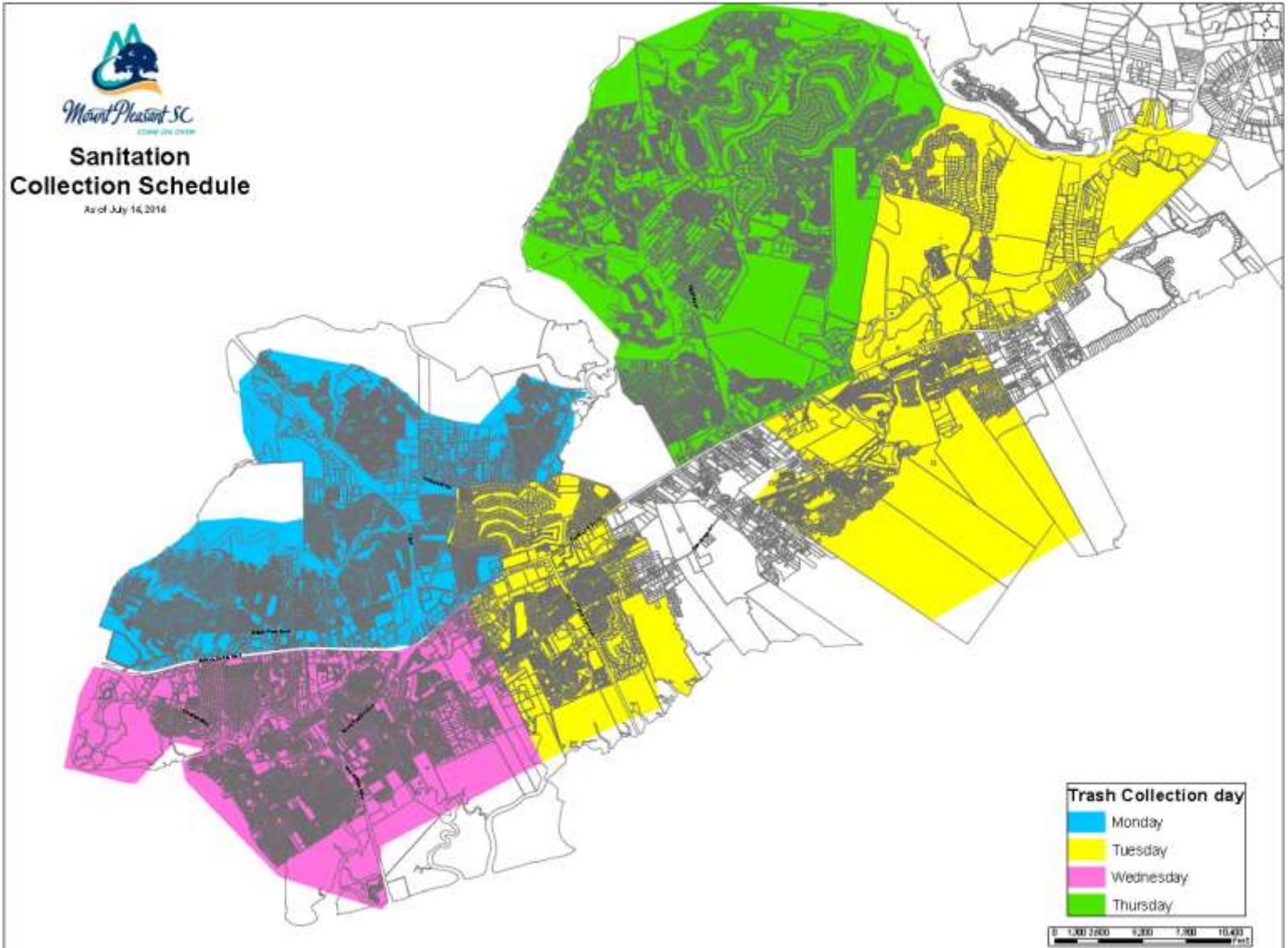
Trash is considered bagged yard debris, tree limbs, household appliances, and household furniture.

COLLECTION SCHEDULE

(See map on last page for additional guidance)

Effective Week of July 07, 2014

If you do not see your main subdivision's name listed, please contact the Sanitation office at 884-8518.
(Not all subdivision's individual neighborhoods have been listed.)



Garbage & trash needs to be placed curbside by 7:00 a.m. on your scheduled collection day.

Garbage is considered household waste placed in your container.

Trash is considered bagged yard debris, tree limbs, household appliances, and household furniture.